

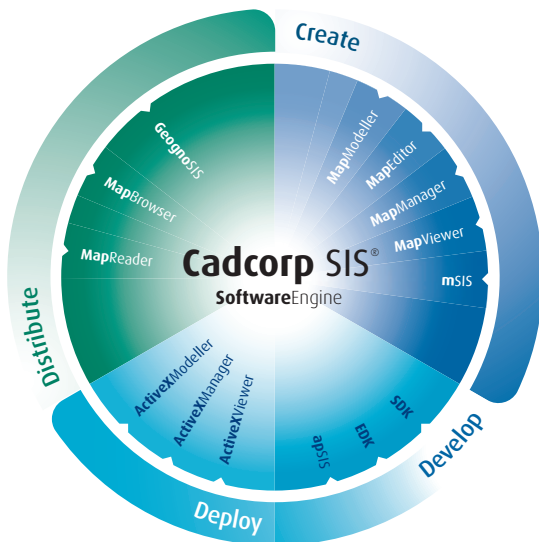
53°09'46"N 0°27'51"W

# Cadcorp SIS<sup>®</sup> Software Development Kit (SDK)

## The power behind rapid GIS application development.

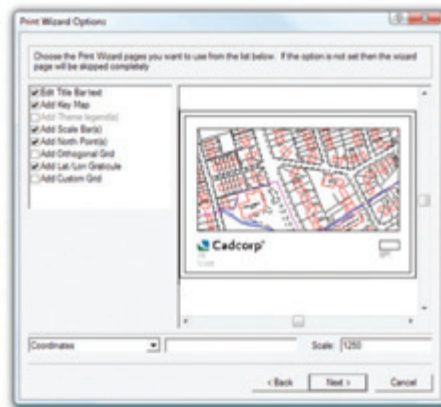
The Cadcorp SIS – Spatial Information System – Software Developer Kit (SDK) can be used to develop and test applications built using ActiveX technology.

Applications developed using the SDK are deployed using Cadcorp SIS ActiveX runtime licences – ActiveX Viewer, ActiveX Manager or ActiveX Modeller.



The Cadcorp SIS Software Developer Kit (SDK) is an ActiveX development environment offering the GIS developer the full functionality of the following Cadcorp SIS desktop GIS products: Map Viewer, Map Manager and Map Modeller.

Unlike low-level component technology where most functionality must be built from scratch, the SDK is a high level development environment. Inclusion of components drawn from standard Cadcorp SIS interface assemblies, such as dialogue boxes, wizards and print templates, greatly simplify the programming task; allowing for rapid application development, testing and deployment.



Access to the Cadcorp SIS Print Wizard via the SDK makes inclusion of hardcopy facilities easy

For example, the Print Wizard, an extremely versatile end user tool for formatting maps, can easily be invoked from the SDK. It offers application developers all the sophistication and flexibility of the Print Wizard that is available in the desktop Cadcorp SIS products.



mis Emergency Systems Ltd (UK) has developed its ALERT C3 system using the Cadcorp SIS ActiveX Control

Applications developed with the SDK cover planning, land charges, development control, facilities management, route planning, agricultural land usage and many others.

Programming is straightforward and familiar using industry standard, non-proprietary languages such as Visual Basic, Visual C++, C#, PowerBuilder and Delphi.



Vicrea Solutions  
bv (Netherlands)  
BAG application  
uses Cadcorp  
SIS ActiveX  
Modeller for  
property  
management

## The Cadcorp SIS Product Family

The Cadcorp SIS product suite is an integrated and complete family of desktop, web, developer and mobile GIS products. With a common GIS engine at the core, all Cadcorp SIS products work in the same way, sharing functionality and benefiting from the following:

- Read and/or write over 160 data formats 'out-of-the-box' without translation
- Access databases without middleware
- Fully interoperable OGC compliant interfaces
- Easily customisable using standard development tools
- Worldwide implementations

## Runtime licensing – Cadcorp SIS ActiveX deployment licences

Cadcorp SIS ActiveX deployment licences allow a developer to deploy an application with full control over the level of functionality and the licensing of users. Developers may choose the level of capability their applications offer by distributing one of the three available ActiveX licence options:

- Cadcorp SIS ActiveX Viewer – extensive GIS data viewing, thematics, redlining
- Cadcorp SIS ActiveX Manager – thematic mapping, projection control, query and basic editing
- Cadcorp SIS ActiveX Modeller – professional GIS analysis and advanced geometric editing

## Summary

Create and test applications using the Cadcorp SIS SDK  
Harness the power of pre-built assemblies included in the SDK as standard. These include Wizards, Overlay Dialogs and Print Templates  
Use industry standard ActiveX development languages such as Visual Basic, Visual C++, C#, PowerBuilder and Delphi  
Deploy applications developed with the Cadcorp SIS SDK using Cadcorp ActiveX licences at either Viewer, Manager or Modeller level

## Product Key Feature Table

	Over 160 supported data formats Database Links including Oracle 10g or 11g, MS SQL Server 2008 and PostGIS Certified Open Geospatial Consortium Inc.® (OGC®) compliant	Thematic mapping	Print wizards	Developer version available	250 coordinate systems and transformations	Data creation and editing	GPS support	Topology creation and editing	Advanced data creation & editing	Advanced thematic mapping	Creation of 3D views & terrains	Viewshed and terrain analysis
Map Viewer	•	•	•	•	•	•	•	•	•	•	•	•
Map Manager	•	•	•	•	•	•	•	•	•	•	•	•
Map Editor	•	•	•	•	•	•	•	•	•	•	•	•
Map Modeller	•	•	•	•	•	•	•	•	•	•	•	•

**Platform Support:** Microsoft Windows XP, Microsoft Windows Vista (Business and Ultimate), Microsoft Windows 2003 Server, Microsoft Windows 2008 Server



**Cadcorp** | Computer Aided Development Corporation Ltd  
Sterling Court, Norton Road, Stevenage, Hertfordshire.  
SG1 2JY. UK  
T 01438 747996 | F 01438 747997

**Cadcorp Inc.** | North America  
1420 Boston-Providence Hwy, Suite #257, Norwood,  
MA 02062 USA  
T +1 (781) 551 2727 | F +1 (781) 551 3404

**Visit [www.cadcorp.com](http://www.cadcorp.com)** | Email [cadcorp@cadcorp.com](mailto:cadcorp@cadcorp.com)  
Cadcorp is a trading name of Computer Aided Development Corporation Ltd